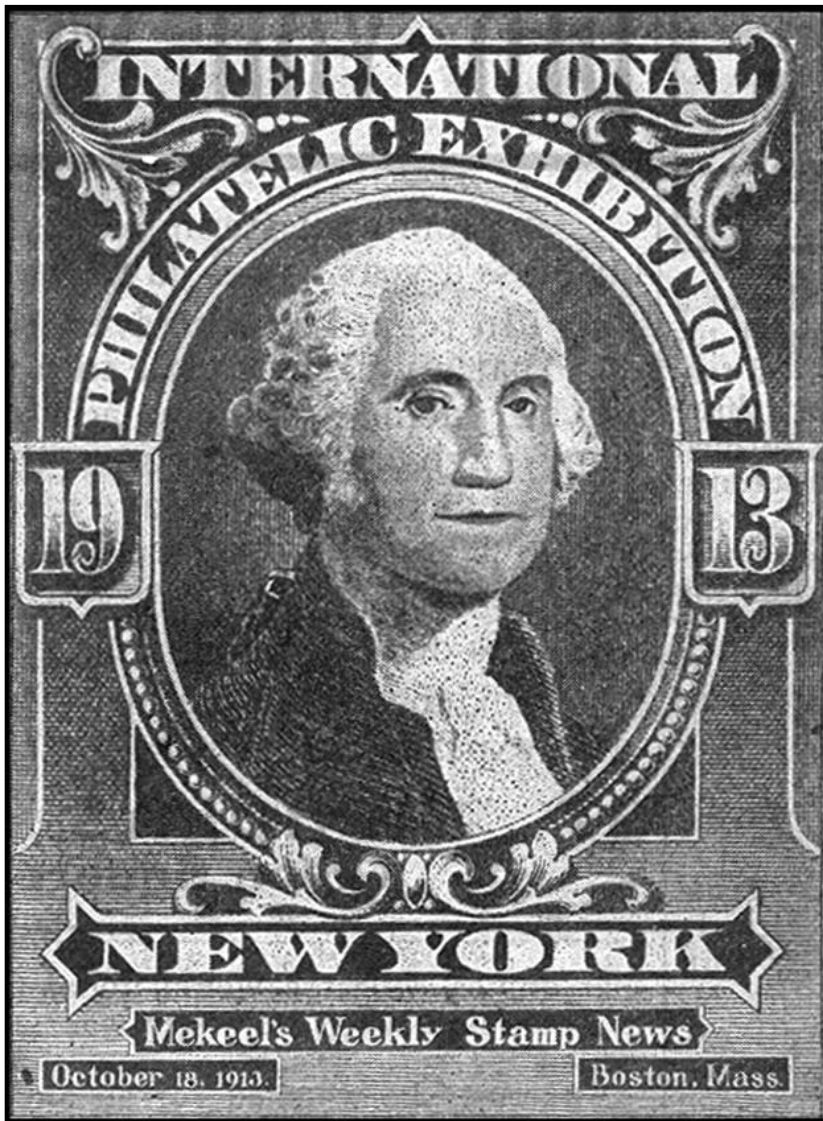


Premium Edition

MEKEEL'S & Stamps Magazine

Volume 211, No. 15 * August 14, 2015 * Single Copy \$3.50
Covering U.S. and W.W. stamps from the classics to new issues!

First U.S. International Revisited World Stamp Show NY 2016 Preview



Everyone will be there — will you?

World Stamp Show



A once in a lifetime opportunity!

Issue #6346, Published continuously since 1891

WWW.STAMPNEWSNOW.COM

Stamp News Publishing, 42 Sentry Way, Merrimack, NH 03054-4407



World Stamp Show-NY 2016

Quick Facts Sheet

May 28-June 4, 2016
Javits Center



Copyright 2016, New York Philatelic Exhibition, Inc.

World Stamp Show-NY 2016, 22 East 35th St, New York, NY 10016 USA

info@ny2016.org

<http://www.ny2016.org>

Name: World Stamp Show-NY 2016, or for short, WSS-NY 2016

When: Saturday, May 28, 2016 (Memorial Day weekend) through Saturday, June 4, 8 total days

Hours: 10 AM to 6 PM daily except Saturday, May 28th (Opening Day Ceremony 9:15 AM, 10:30 AM show opening) and June 4 (10 AM to 3 PM)

Where: Jacob Javits Convention Center, 11th Ave and West 35th Street, New York City, Level 3 (ground level) in Halls 3B, 3D and 3E with 294,000 ft² (27,300 m²)

Admission: Free, registration required, estimated 250,000 attendees

Who: Organized by New York Philatelic Exhibition, Inc., a 501(c)(3) not-for-profit organization

Sponsors: Under the auspices of the American Philatelic Society (www.stamps.org), with support from the American Stamp Dealers Association and United States Postal Service

Host Organisation: Collectors Club of New York

Patronage: Fédération Internationale de Philatélie (FIP)

Leadership Team: Wade Saadi (President), Steven Rod (VP) and 25 other Chairs and support staff

Budget: \$4.2 million, funded through dealer booth fees, memberships, and donations

Logo Designer: Niko Courtelis

Highlights:

- Tens of millions of dollars' worth of philatelic items on display and for sale on the show floor
- New U.S. and foreign stamp issues and first day of issue ceremonies
- U.S. Postal Service retail station
- Special daily postmarks and cancellations
- Foreign postal administration stands selling stamps at face value from 50+ countries, some manned by representatives of each country
- 150+ stamp vendors from over 22 countries selling stamps for pennies to millions of dollars
- Rarities of the world in the Court of Honor and Invited Exhibit displays, including items from Club de Monte Carlo members
- British Guiana 1 cent magenta, world's most expensive stamp worth \$9.5 million dollars
- 700 competitive philatelic exhibits accepted from 76 different countries totaling 4,125 frames (66,000 pages)
- Special showcase of first day cover exhibits
- Philatelic literature competition
- Five major auctions held Monday through Friday
- 125 philatelic societies participating from around the world with over 341 hours of meetings and seminars
- Welcome to Stamp Collecting Pavilion for beginners of all ages with the 32 seat TurningPoint Foundation Pavilion Theater
- Meet an Olympian, world-famous mystery writer and other celebrities
- John Lennon's childhood stamp album and "New York City: A Portrait through Stamp Art" display at the Smithsonian's National Postal Museum booth

First Day Ceremonies:

US Postal Service and UN Postal Administration ceremonies typically last 30-60 minutes and take place on Floor 1 in Rooms 1E12-14.

Saturday, May 28

11:00 AM: USPS- World Stamp Show
1:00 PM: UNPA- UN Peacekeepers

Sunday, May 29

11:00 AM: USPS- Repeal of the Stamp Act, 1766

Monday, May 30

11:00 AM: USPS- Honoring Extraordinary Heroism
1:00 PM: UNPA- UNPA's 65th Anniversary special personalized sheet

Tuesday, May 31

11:00 AM: USPS- View of Our Planets, Pluto Explored

Wednesday, June 1

11:00 AM: USPS- Classics Forever

Thursday, June 2

11:00 AM: USPS- National Parks

Friday, June 3

11:00 AM: USPS- Colorful Celebrations

Daily Themes:

- May 28: The World of Stamps Day
- May 29: Learning Never Ends Day
- May 30: Armed Forces Day
- May 31: Science Meets Stamps Day
- June 1: U.S. Stamp Day
- June 2: Beautiful Americas Day and United Nations Day
- June 3: Children of the World Day
- June 4: Topical Collecting Day

From the Publisher's Desk

by John F. Dunn



We're on our way!

With less than a year to go—a year that will fly by quickly—we now embark on our journey to World Stamp Show NY 2016, which will be held May 28-June 4, 2016 in New York City.

We will lead up to the next U.S. International Philatelic Exhibition in eleven special editions that feature news of the 2016 International as well as revisits to each of the previous Internationals that were held in the United States.

We begin with the latest news from the organizers of WSS NY 2016, followed by coverage of the very first United States International Philatelic Exhibitions with the January 18, 1913 introduction from *Mekeel's Weekly*.

At that time *Mekeel's* was the leading commercial stamp collecting publication in the United States, and throughout 1913 its pages presented news stories leading up to the show. The January 18 edition posed a number of questions about the First U.S. International.

But one that was not asked of 1913 readers, and which is appropriate to ask you today, is:

Will you be there?

In the Metropolitan New York area, this may well be a once in your lifetime event. The last previous New York International was in 1956—60 years ago—and unless you plan on being around 60 years from now, you may not see another in New York.

Also, as it occurs only once in a decade somewhere in the United States, unless you have been to a previous International, you have no idea what a wonderful experience you have in store for you at World Stamp Show NY 2006. Ask anyone who has been to a previous U.S. International if they would like to experience another and you will almost certainly receive a resounding “Yes!”

That includes me. My first International was Interphil, in Philadelphia in 1976—in America's Bicentennial Year. My all-time favorite was Ameripex, in Chicago, in 1986. I couldn't make it to the 1997 International, Pacific '97, which made it that much more satisfying to be part of the 2006 Washington D.C. International.

And now we come to the next great United States philatelic event, and as a native New Yorker, born and bred in Manhattan, I am already making plans to be there.

And so should you. As we move along with our coverage, don't wait to get on board the World Stamp Show train, or plane.

Everyone will be there. Will you? To learn all about what may be your one and only opportunity to be part of a U.S. International Stamp Show, please don't wait for our May 20, 2016 World Stamp Show-NY edition. Go now to <http://www.ny2016.org/>

The leadership

In our coverage of the First International we reproduced a photograph of the 1913 International Executive Committee—a group that included some of the all-time greats—philatelists who continue to be revered and remembered today. They spent countless hours making that first U.S. International a success, and a foundation upon which future Internationals were built.

The same is true for World Stamp Show NY 2016, and its leadership. The officers—all Hall of Famers or future Hall of Famers are:

President, Wade E. Saadi
Vice President, Steven J. Rod
Secretary, Bruce Marsden
Treasurer, Roger Brody
General Counsel, Tom Mazza

And working along with them the many Committee Chairs, who can be seen at <http://www.ny2016.org/>, and beyond this select group there is an untold number of volunteers who promise to make World Stamp Show NY 2016 an event that you will remember forever. (Again, ask anyone who has been to an International and they will be filled with fond memories of their participation.)

The next great philatelist?

At great events like this, we look forward to the youth activities that will be an important part of this show. However, there is another aspect that is easily overlooked, and that is the inspiration that may well produce the next great philatelist.

Perhaps your son or daughter? Grandson or granddaughter? Niece or nephew? Neighbor?

We are confronted every day by messages that want

to turn video gamers into “heroes” by blowing up each other. Why not also have youngsters aspire to being Philatelic Exhibitors, Society leaders, International Gold Medal Winners—maybe even philatelic writers?

It's tough to compete with video games, the internet, youth sport travel teams and the like. World Stamp Show NY 2016 can do just that, as your own enthusiasm will be contagious and spread to those you bring along with you, and our quiet hobby will be presented in an unsurpassed, lively, exciting event.

And while on the subject of new prospects, your adult relatives and friends also deserve your invitation to show them around this massive philatelic event. Believe me, anyone who attends an International just has to come away impressed with our hobby and with an understanding of why it has survived, and thrived, for more than 170 years.

Out of the ordinary

Those who know me know that I am not given to this sort of enthusiasm in my writing. Just know that it is a genuine feeling, based on my own past Internationals—and I hope that it also conveys to you the opportunity you have in the form of World Stamp Show NY 2016.

To paraphrase the October 18, 1913 *Mekeel's Weekly* statement of Willard O. Wylie, “Philatelists the country over should not fail to make New York City their Mecca the week of...May 8-June 4, 2016.”

Everyone Will Be There...



World Stamp Show
NY2016

May 28-June 4, 2016
Javits Center



A Global
Philatelic
Event.



...Exhibitors with 3,800 Frames of Competitive Exhibits

...A Court of Honor with Priceless Rarities

...The United States Postal Service

...Dozens of Postal Administrations

...First Day of Issue Ceremonies

...Approximately 200 Dealers

...Youth & Beginner Activities

...Auctions

...Seminars

...Stamps in Your Attic Informal Evaluations

...Scores of General Philatelic and Specialized Societies

A Philatelic Event of Olympic Proportions

Plus Everything The Big Apple Has to Offer !

A Once in A Decade Philatelic International in the United States and the First Time in New York City Since 1966

More than a Quarter-Million People Will Be There:

Will You? Start making your plans now!

**Learn all there is to know about World Stamp Show NY 2016,
and keep up to date with the latest WSS News at**

<http://www.ny2016.org/>

“We’ll Be There!”

**GET TO KNOW THESE
LEADING DEALERS NOW.**

They’ll be at World Stamp Show NY 2016. Get a running start by contacting them now and telling them your collecting interests! They are ready to serve you NOW!

MORE DEALER ADS, PAGE 6

Tom and Gail Auletta of AZUSA welcome you to browse our huge selection of worldwide & U.S. sets and singles at WSS NY 2016 Corner Booth 657!

Everything from A to Z & USA – that’s AZUSA!

37 continuous years of store operation

on Long Island and Saratoga County, New York

Regularly scheduled auctions

Azusa Collectibles, 258 Ushers Road, Suite 203

Clifton Park, NY 12065 (518) 877-3027

azusacollectibles@yahoo.com



Let’s get together at World Stamp Show NY Booth 1236—**and TODAY Toll Free at 800-470-7708.**

I’m paying the highest prices in America for quality U.S. & Foreign stamp collections!

Count on me for straight talk and an offer that will make you smile. My checkbook and pen are ready.

Want proof? Give me a call.



Ph: 1-800-470-7708
Fax: 516-599-1180
markest@optonline.net
Box 176, Lynbrook, NY 11563



**STOP BY OUR WORLD STAMP SHOW
BOOTH 1170**

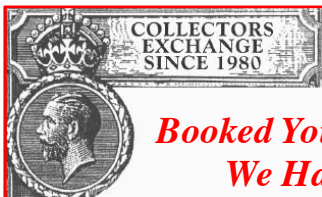
We will have the first day cover stock of A&M Covers as well as thousands of new covers that we have purchased.

Classics, Early Hand-Painted, Airmails, Zeppelins, Patriotics, Early Advertising Covers, Stampless Covers, Events, etc....

The Gold Mine Cover Company

4137 Merrick Road, Massapequa, NY 11758

(516) 795-00900



**The Greatest Stamp
Exhibition in North America
in the Last 10 Years!**

***Booked Your Trip?
We Have!***

Collectors Exchange

Dealers in Stamps of the British Empire Jean and John Latter

WORLD STAMP SHOW NY 2016 BOOTH 757

www.BritishStampsAmerica.com



**We Can Be Your Headquarters for Classic & Modern
U.S. Stamps At World Stamp Show-NY 2016 Booth 1061
AND ALL YEAR ROUND !**

If you seek specialized modern U.S. stamps—from errors and scarce varieties to pre-cancels and missing colors, there’s no place quite like ours—at WSS-NY AND right now at <http://www.bardostamps.com/>. Let’s get acquainted now! Visit my website, look for me at leading shows (listed in our website calendar), phone me at 847-634-2676 or email me at JFB7437@aol.com.

Jim Bardo, Bardo Stamps,

PO Box 7437, Buffalo Grove, IL 60089

**For quality Mint & Used
U.S. Stamps before 1940
and Better U.S. Covers & Postal History**

See Marc and Pam at Booth 756

Trusted and Friendly service since 1964

AAA Stamp & Coin

aaastamp@comcast.net 517-349-0369

**“At WSS NY Booth 1043/1142
we’re bringing together a
World Class Dealer and
World Class Philatelists at
a World Class Show”**



**Don’t just
take our
word:**



“Of all the dealers I have encountered, you two are clearly the most professional. I know that when I buy from you the material is legitimate and the quality as advertised.”

*Lawrence Eagleburger
Former U.S. Secy. of State*

Bobby Prager has assisted thousands of discriminating philatelists in forming some of the most outstanding stamp collections in the world. His reputation as one of America’s most respected stamp consultants has been built on the caring personal relationships he has with our clients.

**“Can’t wait for next May? Let’s get together NOW.
I’m available anytime for a toll free chat, to talk
about your collecting goals—or anything else.”**

**“And if you are selling...we’d rather pay a more than
fair price and buy 90% of the collections offered to us
than make a big score on 10% with low-ball offers.”**

Gary Posner Bobby Prager

Your hobby is alive and well at...



GARY POSNER, INC.

30+ years in business • 800.323.4279 • Fax 516-599-2145
265 Sunrise Highway, Ste. 1-308, Rockville Centre, NY 11570
Cell: 917-538-8133 • GaryPosnerInc@aol.com

**Visit us and view our World Class Stock at
www.garyposnerinc.com**

“We’ll Be There!”

GET TO KNOW THESE
LEADING DEALERS NOW.

They’ll be at World Stamp Show NY 2016.
Get a running start by contacting them now
and telling them your collecting interests!
They are ready to serve you NOW!



Ralph Greenhut

I’ll be at WSS 2016 Booth 1458
but there’s no need to wait...

Get to know MCXI Now!

I have a **TREMENDOUS**

stock that is always
changing...

Please visit my website for my show schedule & features!

www.MCXISTAMPS.com

Ph: 847-549-6468 • Fax: 847-816-4872

1931 Lynn Circle, Libertyville, IL 60048

If you seek philatelic materials of Bangladesh
— stamps, FDCs, Errors & Varieties, and Topicals

We Invite You to World Stamp Show-NY 2016

Booth #1571, May 28-June 4

and All Year Round at

THE MEDIA

35 Shahid Sangbadik Salina Parvin Sarak,
Dhaka-1217, Bangladesh

web: <http://www.mediabd.com>

e-mail: 8311167@gmail.com

Plan Ahead for World Stamp Show NY 2016

Royal William Stamps Ltd. will be at

WSS Booth 561

Get to Know Us Now

Rob Graham, C.A. • Marcel Paquin

Dealing in Australia, British North
America, Canada, Germany, Great
Britain, New Zealand and Russia—and
a wide selection of the rest of the world.



How May We Help You?

PO Box 69058, Skyview Postal Outlet,

Edmonton, Alberta, T6V 1G7

royalwil@interbaun.ca

Lornatstamps.com

lornatstampstore.com



Member, The Royal Philatelic Society, London
The Canadian Stamp Dealers' Association



50 Years of Passion for
Confederate States Stamps & Postal History
Come Together for You at
WORLD STAMP SHOW BOOTH 1365

- Introduced to Confederates in 1965
- Dealer since 1973
- Retailer, writer, researcher, editor, expertizer
- Full retail stock on my Website

From New Collectors Seeking a Stimulating
Specialty to Long-time Confederate Collectors,
Make My Passion Your Passion
at World Stamp Show and All Year Round

PATRICIA A. KAUFMANN

10194 N. Old State Road, Lincoln DE 19960

302-422-2656 ~ trishkauf@comcast.net

Life member: CSA, APS, APRL, USPCS

Member: ASDA, CCNY, RPSL

trishkaufmann.com

It isn't easy, but...

WE CARRY THE WORLD!



“We carry more stamps at shows
than just about anybody.”

See our **HUGE** Stock of
United States and Foreign

UNITED STATES: THE WORKS!

#1 right up to date, mint, used, plates, BOB, etc.

FOREIGN: Millions of stamps, 20¢ to \$5000, A to Z!

SEE US AT SUPERBOOTH 843:

30 feet of counter space, 2 1/2 tons of stamps and
a courteous staff of eight to serve you.

WHAT MORE COULD YOU WANT?!

Jim and Sue Dempsey

A & D Stamps and Coins

2451 Venado Camino, Walnut Creek, CA 94598

925-935-8212, fax 925-935-9277

“JOIN US THERE—MAY 28 TO JUNE 4!”

LOOK FOR IRV MILLER AT WSS BOOTH 937

Stop by our WSS Booth #937 for a FREE Gift

Visit our website
www.millerstamps.com




DARN! I should have bought my stamps from
MILLER'S STAMP CO.
— A name you can trust since 1969 —

12 Douglas Lane, Suite #3 • Waterford, CT 06385
Phone: 860-739-9989 or 860-908-6200
E-mail: stamps@millerstamps.com

TRIPLE S POSTAL HISTORY
P.O. Box 224, Urbana OH 43078
Phones: (937) 653-6376 or (937) 653-8094

We're here to meet your Postal History needs all year round and at World Stamp Show NY Booth 965



www.triple-sonline.com


Ross Wiessmann

U.S. & Foreign Buying & Selling
Key items a specialty!

See us at WSS Booth 670


P.O. Box 590, Augusta, NJ 07822
Phone: 973-875-3793

The World of Stamps is Yours at World Stamp Show Booth 417



Thousands of sets and souvenir sheets from more than 75 nations and encompassing hundreds of topics all can be yours to view and acquire with one-stop shopping at our World Stamp Show-NY 2016 Booth 417

And all year round at www.igpc.com



The Inter-Governmental Philatelic Corp.
161 Helen St., South Plainfield, NJ 07080
Phone 908-548-8088

STEVEN ZIRINSKY
MEMBER PTS, APS, NZSDA, APTA

Stamps, Revenues, Postal History
From Classics to Contemporary to Cinderellas
PO Box 230049, Ansonia Station
New York, NY 10023 USA
World Stamp Show NY Booth 658
www.zirinskystamps.com

MINT BRITISH COMMONWEALTH 1840-1952

We have an extensive stock of mint British area sets & singles, 1840-1952 and we'll have them all at our
World Stamp Show NY Booth 1065.
Can't wait? We're here for you today!
Over 10,000 listings at kaystamps.com

Kay & Company
Box 5545, Bend, OR 97708
kayandco@msn.com • ph/fax: 541-312-4263 • kaystamps.com



This World Stamp Show NY Special Edition is a Compilation of our U.S. Internationals Coverage and an example of what you receive when you subscribe to Mekeel's & STAMPS at www.stampnewsnow.org

WE'LL ALSO BE THERE!

LEONARD STAMPS at Booth 956

Where the Unusual is Usual

We specialize in Cinderellas, Ephemera and Revenues, Especially British Commonwealth Revenues. Plus Unopened French, Italian and British Colonies stamps.

How May We Help You?

hkleonard@starpower.net



**Buying Japan, Korea
CHINA stamps & covers**
at our World Stamp Show Booth 970
RISING SUN STAMPS

3317 Kennedy Avenue
The Villages, FL 32163-6344
cell phone 570-350-4393

BUYING & SELLING WORLDWIDE STAMPS & COVERS AT BOOTH 1056

MOUNTAINSIDE STAMPS

P.O. Box 1116 • Mountainside, NJ 07092 • 908-232-0539

UNITED STATES - SINGLE STAMPS - used and unused, PLATE BLOCKS, BOOKLET PANES and BOOKLETS, B-O-B, DUCKS, REVENUES, SHEETS, FDCs, MICRONESIA, UNITED NATIONS.
CANADA - SINGLES, BOOKLETS, PLATE BLOCKS, REVENUES.
BRITISH COMMONWEALTH - ALL AREAS - Specialty in GREAT BRITAIN, AUSTRALIA, NEW ZEALAND AND BERMUDA.
WESTERN EUROPE - SINGLE STAMPS AND BOOKLETS FROM GERMANY, FRANCE, ITALY, VATICAN, GREECE, SWITZERLAND, LIECHTENSTEIN, BELGIUM, NETHERLANDS, LUXEMBOURG, PORTUGAL, SPAIN, AND SCANDINAVIA.
ASIA and LATIN AMERICA - NICE SELECTION OF STAMPS

www.mountainsidestamps.com

SOLERYLLACH
subastas internacionales, s.a.

booth 1364 (N) at WSS NY 2016

Specialized in
Worldwide Postal History
Spain and Colonies

www.soleryllach.com

Beethoven, 13 - Tel. (34)93 201 87 33 - Fax 93 202 33 06 - Barcelona 08021
syl@soleryllach.com



Europe & Colonies a Specialty

*We specialize in
France & Colonies,
Germany &
Colonies, Spain
& Colonies,
Portugal &
Colonies, Britain
& Colonies PLUS
other hard-to-find
pieces.*



**We'll be at
World Stamp Show NY 2016
Booths 643 & 645
How may we help you
NOW?**

STAMPMEN INC.

Kevin@stampmen.net

PO Box 300, Belle Meade NJ 08502

Phone 908-281-7591 • Fax 908-431-9329

BEJJCO
OF FLORIDA, INC.

Arnold H. Selengut



U.S. & Worldwide

**Stamps & Covers
All Continents, All Countries**

**Agent for the
WORLD TRAVELER
COLLECTION**

1840 to 1981, 99%+ complete
(including Scott listed varieties)

**Selections Available at the Show
Serious Want Lists Accepted**

Let us help you fill those empty spaces.

See us at World Stamp Show-NY
Booth 1137

E-mail: arnsel@verizon.net

P.O. Box 16681

Temple Terrace, FL 33687-6681

Phone: (813) 980-0734



Rushstamps ARE BUYING



Great Britain, British Commonwealth and Worldwide, especially Omnibus issues 1935 to 1966 in all conditions. Anything considered, including Errors, Varieties, Back of the Book, Revenues, Cinderellas, Old Covers/FDC'S.

BOOTH #1164

TOP PRICES PAID – SEE US AT THE WORLD STAMP SHOW – NY 2016

Payment by Check on Citibank, New York or Cash by Arrangement
Make us your first Port of Call – Other Dealers Sell to Us!

Rushstamps (RETAIL) LTD.

P.O. Box One, Lyndhurst, Hampshire
England SO43 7PP

Tel: 011 44 23 8028 2044

Fax: 011 44 23 8028 2981

Email: enquiries@rushstamps.co.uk
www.rushstampscompare.com



A Once In A Decade Opportunity!

Consign Now for One of the
Greatest Auctions in Our History.

June 2, 2016



See page 10 for the full message from
Kelleher Auctions



See page 14 for the full message from
Tahiti • French Polynesia Post

Canada Stamp Finder

Specialist in Rare Stamps of Canada and the Provinces
Members of: CSDA, RPSC, BNAPS, APS, CCNY, NSDA, CPS of GB, PTS & IFSDA

The Admiral Issue of Canada 1911-1931



Canada #110a-122a, #136-138 1¢ to \$1.00 Admiral CPL SET OF IMPERF PAIRS, NEVER HINGED. An extremely difficult set to assemble: All NH with Post Office Fresh Colors and Crisp impression. We note on 20c a natural horizontal gum skip on lower left stamp and the 4c pair has a horizontal crease running at the bottom of the 2 stamps not visible from the front; all other pairs are perfect. Extremely Rare set, great King George V Admiral showpiece. NH pairs are retailing at full and above catalog. PRICE TO SELL!!!
Cat. Value: \$50,500.00 Net: \$34,950.00 CAD

(LH/Hinged set also available at \$14,950.00 CAD)

Booth #1070

Maxime Stephanie Herold

54 Soccavo Crescent, Brampton
Ontario, L6Y 0W3, Canada

Tel: +1 (514) 238-5751

Fax: +1 (323) 315-2635

Toll Free: 1 (877) 412-3106

Email: info@canadastampfinder.com

www.canadastampfinder.com

World Stamp Show

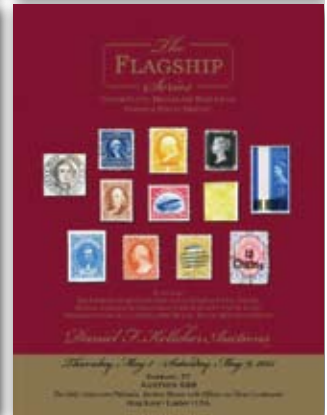
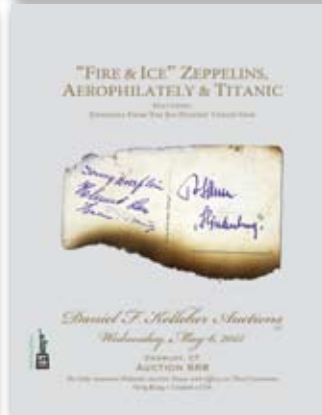
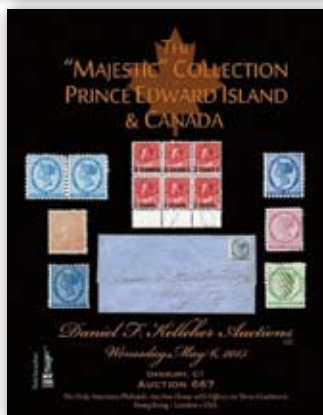
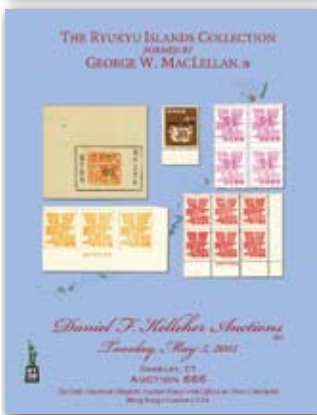
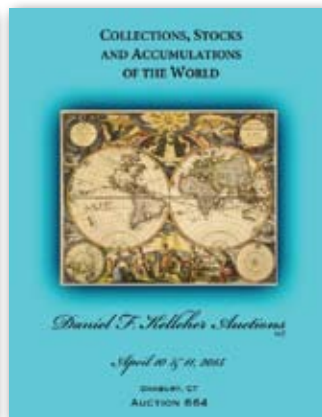
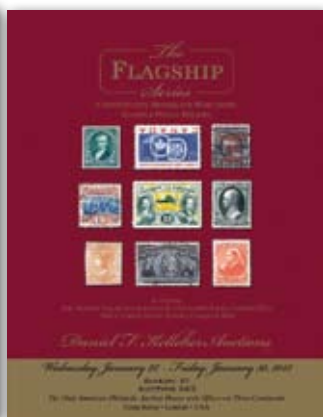


After the Show

For MORE
News, Dealers
and
Special Offers
go to

StampNewsNow.com

What Kelleher does
BETTER than anyone...
PUBLIC AUCTION SALES.
 Contact us now or visit with us at
World Stamp Show - NY 2016:
 Superbooth 1329 to achieve your best.



Daniel F. Kelleher Auctions

America's Oldest Philatelic Auction House • Established 1885
 4 Finance Drive, Suite 100 • Danbury, CT 06810
 Phone: 203.297.6056 • Toll Free: 877.316.2895 • Fax: 203.297.6059
 Email: info@kelleherauctions.com
 www.kelleherauctions.com



Cool stamps from the North

ÅLAND ISLANDS FINLAND



NORWAY



GREENLAND



FAROE ISLANDS

ICELAND

Are you interested in beautiful stamps from the Top of the World?
Visit the website www.topoftheworld.nu which is run by the Postal Administrations of the Nordic countries.

Welcome to our stand no. 328



Åland Post
Stamps
PO Box 1100
AX-22111 Mariehamn
ÅLAND, FINLAND
www.alandstamps.com



Posti
PO Box 3
FI-00011 POSTI
FINLAND
www.posti.fi



Posta Stamps
Óðinshædd 2
FO-100 Tórshavn
FAROE ISLANDS
www.stamps.fo



Norway Post - Philatelic Service
P.O.Box 250
NO-0510 OSLO
NORWAY
www.posten.no/frimerkebutikken



Iceland Post - Postphil
Storhofdi 29
110 Reykjavik
ICELAND
www.stamps.is



POST Greenland - Filatelia
P.O. Box 121
3913 Tasilaq
GREENLAND
www.stamps.gl



US Agent:
Nordica
P.O. Box 284
Old Bethpage, NY 11804
USA
Tel. (516) 931 3485

World Stamp Show NY 2016 News Update, August 18:

Hotels Information Announced



World Stamp Show-New York 2016 has announced that the hotel reservations system is now open for all who plan to attend the show.

The reservation system is hosted by Experient, the show's Official Housing Provider, so will be visiting the Experient website when you click the link to make your reservation.

Depending on your participation, there are two distinct links for the hotel reservations page.

For show attendees: <https://registration.experientevent.com/ShowWSS161/>

For dealers and postal administrations: <http://registration.experientevent.com/showWSS161/?flowcode=DEL>

The reason for two different links is that it helps the show organizers track dealer reservations separately. The hotels and prices are the same for both links.

The links for hotel reservations are also available on the World Stamp Show-New York 2016 website at

http://www.ny2016.org/SubMenu/Hotel_Reservations.aspx?id=522

When you arrive at the reservation page which has a list of the hotels, you will want to scroll to the bottom of the page and enter your arrival and departure dates and number of rooms required, then click SEARCH. After that, select your preferred hotel and follow the prompts to complete your reservation. If you need any assistance in making your reservation, contact the Experient customer service via worldstamp@experient-inc.com, toll free 800-967-8852, International, 847-996-5832.

The show organizers also stated, "We worked to secure the best rates available with our conference hotels in New York City. Our Convention Headquarters is the Marriott Marquis-Times Square. By booking in one of the official conference hotels, you have the support of our dedicated Housing Bureau team as well as extended opportunities with fellow attendees. In addition, you help World Stamp Show-NY 2016 meet its obligations to the conference hotels which enabled the reduced rates below. We appreciate your continued support!"

Here's the list of hotels from the Experient site:

Hotel	Single.....	Double	Triple	Quad	Rating
* Courtyard Newark Downtown	\$139.00	\$139.00	\$139.00	\$139.00	4 1/2 Stars
* Courtyard Newark Liberty International Airport ..	\$129.00	\$129.00	\$129.00	\$129.00	4 Stars
Courtyard Manhattan 5th Avenue	\$269.00	\$269.00	\$299.00	N/A	4 Stars
* Courtyard Secaucus Meadowlands	\$159.00	\$159.00	\$159.00	\$159.00	4 Stars
Doubletree by Hilton	\$159.00	\$159.00	\$159.00	\$159.00	4 Stars
* Embassy Suites Hotel Secaucus-Meadowlands	\$189.00	\$189.00	\$189.00	\$189.00	4 Stars
Element Times Square West	\$219.00	\$219.00	\$229.00	\$239.00	3 1/2 Stars
Fairfield Inn & Suites Times Square	\$289.00	\$289.00	N/A	N/A	4 Stars
* Fairfield Inn East Rutherford	\$139.00	\$139.00	\$139.00	\$139.00	4 Stars
Four Points Midtown Times Square	\$279.00	\$279.00	N/A	N/A	3 1/2 Stars
Holiday Inn Express -Manhattan West Side	\$219.00	\$219.00	\$219.00	\$219.00	3 Stars
* Holiday Inn Secaucus	\$159.00	\$159.00	\$159.00	\$159.00	3 1/2 Stars
Hudson New York	\$209.00	\$209.00	\$209.00	\$209.00	3 1/2 Stars
JW Marriott Essex House	\$339.00	\$339.00	N/A	N/A	4 Stars
Marriott Brooklyn Bridge	\$259.00	\$259.00	\$289.00	N/A	4 Stars
* Meadowlands River Inn	\$159.00	\$159.00	\$159.00	\$159.00	3 Stars
Millennium Broadway Hotel	\$249.00	\$279.00	\$309.00	\$309.00	4 Stars
New York Marriott Marquis	\$279.00	\$279.00	\$309.00	N/A	4 Stars
* Newark Liberty International Airport Marriott	\$154.00	\$154.00	\$154.00	\$154.00	3 1/2 Stars
* Quality Inn Meadowlands	\$129.00	\$129.00	\$129.00	\$129.00	2 1/2 Stars
Quality Inn Midtown West	\$239.00	\$239.00	\$239.00	\$239.00	3 1/2 Stars
* Renaissance Newark Airport Hotel	\$144.00	\$144.00	\$144.00	\$144.00	4 Stars
Renaissance Times Square	\$289.00	\$289.00	\$319.00	N/A	4 Stars
Waldorf Astoria New York	\$359.00	\$359.00	\$389.00	\$419.00	4 Stars
* Wyndham Garden Hotel - Newark	\$99.00	\$109.00	\$119.00	\$129.00	3 1/2 Stars
The Wyndham New Yorker Hotel	\$239.00	\$239.00	\$259.00	\$279.00	4 Stars
YOTEL New York	\$219.00	\$219.00	\$219.00	N/A	4 Stars

* Located in New Jersey; Most of these NJ hotels are accessible by NJ Transit Bus, many of which stop at the Javits Center. Public ferry or train service also is available from across the Hudson. Check with the specific hotel to determine what is available, including hotel shuttles.

www.ny2016.org

info@ny2016.org

22 East 35th Street, NY, NY 10016





World Stamp Show NY 2016 News Update, September 1

There is much of interest to report from the World Stamp Show NY 2016 Newsletter #9. We reported in our August 28 WSS Edition the information on discounted hotel accommodations...so take this as a reminder to make your reservations sooner rather than later. For show like this, the best deals (location and cost) will sell out fast.

You also don't need to wait to see the WSS-NY 2016 information here. It can always be found online at the show site, www.ny2016.org. At that site you can also sign up to receive the Newsletters.

Having said that, here's the latest news:

Beginners' Pavilion

One of the most important booths at the show, the "Welcome to Stamp Collecting Pavilion" will be in a high traffic area right next to the U.S. Postal Service booth. It is here where prospects young and old will decide if they want to pursue our hobby.

The 5,000 square feet of space is going to be divided into three sections—a youth area, an adult area, and a theater shared by both. Experienced youth educators and APS StampBuddy mentors will meet, greet and introduce their respective audiences to philately. A combination of storytelling, lectures and other activities are planned, including plenty of free stamps for everyone.

At least 6,000 youngsters are expected to take field trips from local schools to visit the Javits Center and WSS-NY 2016. Those of us who recall with fondness our own visits as youngsters to stamp shows will understand why a great first impression is so important to the youngsters and to our hobby.

Additional Auctioneer Selected

Corinphila Auktionen, the Zurich-based auction house, has been selected as the fifth official auctioneer of WSS-NY 2016. They are part of the Global Philatelic Network that also includes Heinrich Köhler of Germany, Corinphila Veilingen of the Netherlands, H.R. Harmer of the U.S. and John Bull of Hong Kong.

Corinphila joins these other official auctioneers:

- Auktionshaus Christoph Gärtner
- Daniel F. Kelleher Auctions
- Schuyler Rumsey Philatelic Auctions
- Robert A. Siegel Auction Galleries

Contact these houses directly at your earliest convenience for consignment information.

MyNY2016 App Up and Running

In development for many months, the MyNY2016 personal scheduler is now ready for use. Accessible through the Internet using PCs or mobile devices, this free application allows you to put together a list of meetings and events you plan to attend.

To use it, simply create an account with your email address and password, or log in if you have already done so. Look for the green "Log In / Register" links at the upper left of most web pages.

That takes you to a listing of events, where you can register by clicking the green "Register" button. Some listings will be accompanied by a "More Information" link that will provide you with details. At any time, you will be able to see your complete schedule, make changes as necessary, and print the results.

The current schedule of society meetings also should be online by now, and more content and features will be added as they are determined.

Gems on Display



The WSS NY website has a new page on it called "Gems on Display" that will feature images and brief descriptions of some of the many treasures that you will be able to view at the show. Here's just one of them, one of three documents in public hands bearing the signature of the last Dutch director-general of New Amsterdam, Peter Stuyvesant, who served from 1646-1664. This edict was signed by him in 1652. The British forced the Dutch out and renamed the colony "New York."

Theme Day Subjects Announced

The U.S. Postal Service has released the subjects chosen for the daily postmarks available during WSS-NY 2016. The specific dates each will be used are yet to be determined.

- America the Beautiful Day
- Armed Forces Day
- Children of the World Day
- Diversity Day
- Learning Never Ends Day
- Postal History and Stamp Collecting Day
- Topical Collecting Day
- United Nations & Pan American Day

Social Function News

The United States Classics Society will be sponsoring a dinner on Friday, June 3 at the famous Michael's Restaurant, 24 West 55th Street. The Classics Society affair will take over the entire art-filled restaurant. Other societies and organizations looking to arrange a special outing for their group during WSS-NY 2016 should contact carol.bommarito@ny2016.org ASAP.




 tahitiphilatelie.com

COME EXPLORE COLORFUL STAMPS FROM PARADISE AT
WORLD STAMP SHOW
NEW-YORK 2016
BOOTH 102 : TAHITI • FRENCH POLYNESIA

Photos© : Damien DUFOUR
 Pavillon NOIR • tél. • 87 77 98 41



 opt.pf

www.opt.pf

OPT

Office des Postes et Télécommunications - Polynésie française



USPS Update:

27 Stamps Set for World Stamp Show–NY 2016

by John F. Dunn

The U.S. Postal Service has announced the dates for its World Stamp Show–NY 2016 First Day events—and added a few more issues along the way. Here’s the lineup:

May 28: World Stamp Show NY panes of 12, 11 a.m.

This previously announced issue is a remake of the 2015 stamps with designs that some New Yorkers feel look like the old Subway tokens and which did not excite most collectors. They will be released on the opening day of the show and will be followed by other more exciting releases.



May 29: Repeal of the Stamp Act, 1766, pane of 10 with pictorial margin, 11 a.m.



This issue also was announced last year. The stamps (single shown at right) comes in a pane of 10 with a pictorial margin that includes the Revenue stamp proof at the left. It was Acts such as this that led to the colonies eventually seeking independence.



May 30, Memorial Day, Service Medals, 4 designs in a PSA pane of 12, 11 a.m.



This issue continues the Postal Service tradition of honoring the bravery and achievements of members of the U.S. Armed Forces, previous stamps having depicted the highest military decoration for valor in combat, the Medal of Honor.

These new stamps recognize the second highest decoration: the Distinguished Service Cross (Army), Navy Cross (Navy and Marine Corps), Air Force Cross, and Coast Guard Cross. They are awarded for acts of extraordinary heroism in which an individual braved enemy fire, made bold decisions, and took selfless actions to rescue or protect fellow service members. There are a total of 12 stamps on the sheet, shown in two rows.

May 31, Views of Our Planets (pane of 16) and Pluto Explored! (pane of 4), Joint FDC Ceremony at 11 a.m.

These previously announced issues cover the full gamut of the Planets in one pane and the “former planet,” Pluto, which was demoted to “dwarf planet” status. As a consolation, Pluto gets two different designs

in its own pane of four while the eight planets get only one design, in a pane of 16 with two of each design.

Ironically, Pluto was taken off the list of planets while the New Horizons space probe was on its way in a 9.5 year journey that made its closest approach to Pluto last July 14.



June 1: Classics Reproductions Souvenir Sheet, 11 a.m.



This newly announced issue continues the Postal Service tradition of reproducing old designs for U.S. Internationals. At press time the Postal People could only provide this preliminary artwork, showing six Classic stamp designs, now as Forever stamps. We will have complete information on this issue in our June edition.

June 2: National Parks: pane of 16 designs, 11 a.m.

The Postal People are rolling out these designs one at

a time, so as we went to press on April 14, we had learned that stamps would be issued for Acadia National Park, Arches National Park, Assateague Island National Seashore, Bandelier National Monument, Carlsbad Caverns National Park, Everglades National Park, and Glacier Bay National Park. The set of 16 is being issued to mark the 100th Anniversary of the National Park Service. In addition to the WSS First Day of Issue, there will be dedication ceremonies at or in the vicinity of each of the National Parks depicted on the stamps. We show here the Acadia stamp and will have full coverage of the complete set in our next issue.



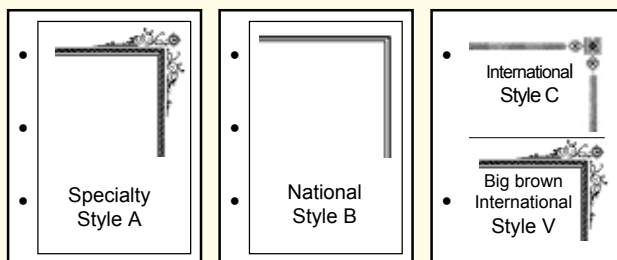
June 3: Colorful Celebrations pane of 10 designs, 11 a.m.

Also newly announced, this set of 10 (one shown) is based on the craft of papel picado, which translates to “pierced paper.” This art style originated in Mexico, and is used for many festivities by Mexican-Americans.





G&K - Pages to Fit Scott Albums



G&K Pages to fit Specialty/National Albums

10x11½" Top quality, chemically neutral bond pages printed on one side.

Available blank or quadrilled in soft green.

Style A—Foreign Blank *, pkg. of 40	ZGS-BLARA	\$17.57	\$14.06
Foreign Quadrilled ., pkg. of 40	ZGS-QUARA	17.57	14.06
Style B—U.S. Blank *, pkg. of 40	ZGS-BLARB	17.57	14.06
U.S. Quadrilled *, pkg. of 40	ZGS-QUARB	17.57	14.06
U.S. Postcard Blank *, pkg. of 20	ZSC-U48R	16.99	13.59
All-Blank Pages, pkg. of 40 *	ZGS-BLARBP	17.57	14.06

* Punched to fit both the 2-post and 3-ring formats

G&K Interleaving to fit Specialty/National Albums

Glassine, Pkg. of 100 * (500 for \$30)	ZGS-GLAI	11.99	9.59
Crystal-clear film, Pkg. of 100 * (500 for \$50)	ZGS-ACEI	16.45	13.16

* Punched to fit both the 2-post and 3-ring formats

G&K Accessories to fit Specialty/National Albums

Inventory Record pages *

Border A Specialty Style, pkg. of 40	ZGS-INVRA	\$14.52	\$10.16
Border B National Style, pkg. of 40	ZGS-INVRB	14.52	10.16
Fly Leaves, GR, pkg. of 4, 2-Post Style	ZGS-FLYIG	8.15	6.52
Fly Leaves, BK, pkg. of 4, 3-Ring Style	ZGS-FLYIB	8.15	6.52

* Punched to fit both the 2-post and 3-ring formats.

G&K Pages to fit Scott International Albums

9¼x11¼" top quality, chemically neutral bond pages printed on both sides.

Available blank or quadrilled in soft Green. Sold in pkgs. of 40.

Style C—Blank., pkgs of 40	ZGS-BLARC	\$17.57	\$14.06
Quadrilled, pkgs. of 40	ZGS-QUARC	17.57	14.06
Style V—Blank - Big brown int'l., pkgs. of 40	ZVR-W04R	17.57	14.06
All-Blank Pages - Big brown int'l., pkgs. of 40	ZVR-W04R2	17.57	14.06

G&K Interleaving to fit International Albums

Glassine, pkg. of 100	ZGS-GLAIC	\$11.99	\$9.59
Crystal-clear film, pkg. of 100	ZGS-ACEIC	16.45	13.16

G&K - Pages to Fit Harris and Minkus Albums



G&K - Pages to Fit Harris Albums

G&K Blank Pages To Fit Harris Albums

Same style and weight as the Harris brand pages, but with 25% more pages (80 pages) per pkg. Page size 9½x12".

Blank Pgs, U.S., Canada, 1 sided	ZGH-BLAR1
Quadrilled Pgs, U.S., Can., 1 sided	ZGH-QUAR1
Blank Pages, World, 2-sided	ZGH-BLAR2
Quadrilled Pgs World, 2-sided	ZGH-QUAR2

\$17.57 each, **SSS Price \$14.06** each

G&K Interleaving To Fit Harris Albums

Glassine, pkg./100	ZGH-BLAI	\$11.99,	SSS Price \$9.59
Crystal-clear, pkg./100	ZGH-ACEI	\$16.45,	SSS Price \$13.16

G&K - Pages to Fit Minkus Albums

G&K Pages to fit Minkus Albums

Same style and weight as the Minkus Brand Pages, but with 25 (not 20) pages per pkg.

3-Ring - Blank Pages, 1 sided 8½x11"	ZGM-BLAR3R	\$17.57	\$14.06
3-Ring - Quadrilled Pages, 1 sided 8½x11"	ZGM-QUAR3R	17.57	14.06
2-Post - Regional Blank Pages, 1 sided	ZGM-BLAR2P1	17.57	14.06
2-Post - Regional Quadrilled Pages, 1 sided	ZGM-QUAR2P1	17.57	14.06
2-Post - World Blank Pages, 2-sided *	ZGM-BLAR2P2	17.57	14.06
2-Post - World Quadrilled Pages, 2-sided *	ZGM-QUAR2P2	17.57	14.06

G&K Interleaving to fit Minkus Albums

To fit 2-Post * 9½x11" Albums, Pkg of 100

Glassine *	ZGM-GLAI2P	\$11.99	\$9.59
Crystal Clear Film *	ZGM-ACEI2P	16.45	13.16

To fit 3-Ring 8½x11" Albums Pkg of 100

Glassine	ZGM-GLAI3R	11.99	9.59
Crystal Clear Film	ZGM-ACEI3R	16.45	13.16

Visit us online at

www.subwaystamp.com!

America's (and the World's) Largest Stamp Collecting Supply Company

SHIPPING CHARGES
 By MAIL/UPS *: \$7.50 Min. Orders over \$54 ADD 12%,
 Over \$100 ADD 10%, Over \$250 ADD 8%
 * Some Remote Areas Carry Higher Shipping charges.
 PA Residents: ADD 6% Sales Tax
 ADD \$5/\$10 Per Parcel on high weight/low cost orders shipped to the 11 Western States & TX
 Ask for Shipping Charges to AK, HI, P.R., APO's, FPO's, Foreign

Phone: 1-800-221-9960 Fax: 1-888-221-9960
 Email: custserv@subwaystamp.com Phone: 814-946-1000 Fax: 814-946-9997






 2121 Beale Ave, Altoona, Pa 16601 - DEPT. MEK
www.subwaystamp.com/
 Prices subject to change without notice
 Not Responsible For Typographical Errors



World Stamp Show NY 2016 News Update: Society Booths Sold Out?

As we went to press, 62 of the 63 available booths for World Stamp Show 2016—scheduled for New York City from May 28-June 4, 2016—have been sold, so the only question is whether that last booth will have been sold by the time you read this. (For information and, hopefully, to sign up, interested Society officers can go to the WSS website, at

<http://www.ny2016.org/SubMenu/Participation.aspx?id=499>.

This progress report on what is shaping up to be one of the most spectacular philatelic exhibitions ever held was part of a WSS Society Special Edition Newsletter released in late November. That Special Edition was chock full of information for participating societies.

Societies contributing \$250 or more are entitled to a 16 page exhibit frame, which will be located in a designated area on the floor with other society frames. They are intended to be used to promote the various societies. Show organizers recommend including material specific to your collecting specialty, focusing on the benefits of joining your organization, and concluding with the location of your society booth, with an invitation to visit it for more information.

Other Society support includes the availability of Promotional Items to help spread the word about World Stamp Show NY 2016 and their participation; an Online Events Listing for show meetings, as well as “after-hours” events or in venues other than the show site, the Javits Center; and distribution of promotional information to appropriate media—including the possibility of translation into a foreign language. Meeting space also is still available throughout the eight day show at no cost.

Actually, there are now close to 100 Societies who will be participating in one way or another at World Stamp Show NY 2016: Here’s a list:

American Air Mail Society - AAMS
 American Association of Philatelic Exhibitors - AAPE
 American First Day Cover Society - AFDCS
 American Philatelic Congress - APC
 American Philatelic Research Library - APRL
 American Philatelic Society - APS
 American Revenue Association
 American Society of Polar Philatelists - ASPP
 American Topical Association - ATA
 Bechuanalands and Botswana Society - BBS
 Bermuda Collectors Society - BCS
 Boston 2026 World Stamp Show
 British Caribbean Philatelic Study Group - BCPSG
 British North America Philatelic Society - BNAPS
 British Postal Museum and Archive
 Canal Zone Study Group - CZSG
 Carriers and Locals Society - CLS
 CartoPhilatelic Society
 Cats on Stamps Study Unit of the American Topical Association
 China Stamp Society - CSS
 Christmas Seal and Charity Stamp Society
 Cinderella Stamp Club of Great Britain - CSC
 Civil Censorship Study Group - CCSG
 Collectors Club - CC
 Colombia-Panama Philatelic Study Group - COPAPHIL
 Confederate Stamp Alliance - CSA
 Cuban Philatelic Society of America - CPSA
 Ebony Society of Philatelic Events & Reflections - ESPER
 Egypt Study Circle - ESC
 Ephemera Society of America - ESA
 Falkland Islands Philatelic Study Group - FIPSG
 Fédération Internationale de Philatélie - FIP
 Fellowship of Samoa Specialists - FSS
 France and Colonies Philatelic Society - FCPS
 G.B. Overprints Society - GBOS
 Germany Philatelic Society - GPS
 Haiti Philatelic Society - HPS
 Hong Kong Study Circle - HKSC
 India Study Circle - ISC
 International Philippine Philatelic Society - IPPS
 International Society for Japanese Philately - ISJP
 International Society of Worldwide Stamp Collectors - ISWSC
 Iran Philatelic Study Circle - IPSC
 Meter Stamp Society - MSS
 Metropolitan Air Post Society - MAPS
 Mexico-Elmhurst Philatelic Society International - MEPSI
 Military Postal History Society - MPHS
 National Duck Stamp Collectors Society - NDSCS
 Nepal and Tibet Philatelic Study Circle - NTPSC
 Nicaragua Study Group - NSG
 Ottoman and Near East Philatelic Society - ONEPS
 Pacific Island Study Group - PISG
 Papua Philatelic Society - PPS
 Perfins Club - PC
 Philatelic Foundation - PF
 Philatelic Society for Greater Southern Africa - PSGSA
 Pitcairn Islands Study Group - PISG
 Plate Number Coil Collectors Club - PNC3
 Polonus Philatelic Society - PPS
 Post Mark Collectors Club - PMCC
 Postal History Foundation - PHF
 Postal History Society - PHS
 Postal History Society of Canada - PHSC
 Postal Label Study Group - PLSG
 Postal Order Society - POS
 Poster Stamp Collectors Club - PSCC
 Precancel Stamp Society - PSS
 Rhodesian Study Circle - RSC
 Rocky Mountain Philatelic Library - RMPL
 Rossica Society of Russian Philately - ROSSICA
 Royal Philatelic Society of Canada - RPSC
 Royal Philatelic Society of London - RPSEL
 Scandinavian Collectors Club - SCC
 Scouts on Stamps Society International - SOSSI
 Society for Czechoslovak Philately
 Society for Hungarian Philately - SHP
 Society for Thai Philately - STP
 Society of Australasian Specialists/Oceania - SASO
 Society of Indo-China Philatelists - SIP
 Society of Israel Philatelists - SIP
 Society of Postal Historians - SPH
 South African Collectors Society, UK
 Space Unit of the American Topical Association - SU
 Spanish Philatelic Society - SPSS
 Spellman Museum of Stamps and Postal History - SM
 Sports Philatelists International - SPI
 St. Helena, Ascension & Tristan da Cunha Philatelic Society - SATPS
 State Revenue Society
 U.S. Philatelic Classics Society - USPCS
 U.S. Possessions Philatelic Society - USPPS
 United Postal Stationery Society - UPSS
 United States Stamp Society - USSS
 Universal Ship Cancellation Society - USCS
 Westfield Stamp Club - WSC
 World Stamp Show-NY 2016 Social Media Followers
 Wreck & Crash Mail Society - WCMS



Bob Prager

A **VALUABLE** Announcement **FOR YOU**



Gary Posner

If You Have Stamps to Sell.

World Stamp Show-NY 2016 will soon be here, and at Double Booth #1043 & 1142 our goal is to have **THE BEST STOCKED BOOTH** at the show.

WE WILL PAY TOP MARKET PRICES FOR YOUR STAMPS!

Or if you prefer, we can take your stamps on consignment.

We are buying U.S. Singles, U.S. Plate Blocks, U.S. Collections, Worldwide Collections and Worldwide Rarities!

**YOU WILL NEVER HAVE A BETTER TIME
TO SELL YOUR STAMPS.**

An International Exhibition is held in the U.S only once every decade, so you can sell **NOW** at high International Show prices.

**THERE IS NO ONE BETTER TO SELL TO
THAN GARY POSNER, INC.**

We will view your stamps as soon as possible, make you a satisfying offer, **PAY YOU ON THE SPOT** or take them on consignment if you prefer.

We are successful on more than 90%
of the Collections we are offered!
All it takes to sell or consign your
stamps now is to phone Bob Prager
at 917-538-8133 or 800-323-4279.



Bob Prager



GARY POSNER, INC.

265 Sunrise Highway, Ste. 1-308, Rockville Centre, NY 11570

Cell: 917-538-8133 • Phone 800.323.4279 • Fax 516-599-2145

www.garyposnerinc.com • GaryPosnerInc@aol.com



From the Publisher's Desk

by John F. Dunn



It's Almost Here.

"It" being World Stamp Show-NY 2016.

Here at Stamp News Publishing we have been working on our little contribution to covering the show since last July. That was when we announced our series of 11 Special Editions with coverage of the May 28-June 4 International along with each of the previous 10 U.S. Internationals.

That program has exceeded my own expectations, not only with the booth holder advertising participation, but, more important, with the coverage of those previous shows. We—that is our predecessor publishers—were in the unique position of having covered each of those shows in the pages of *Mekeel's Weekly* and *STAMPS Magazine*, so it was a natural to bring back that coverage.

But enough about us...

The Momentum Builds

I had a brief, but invigorating, phone conversation the other day with WSS Vice-President Steven Rod. He is looking forward to a great U.S. International and described a

bit of what they are doing to bring that about.

I have said many times is that Ameripex was the finest show ever held in the United States—but that is because, as in most instances, "history" has to be modified to "history in my own experience."

This is why "All Time" athlete opinion polls usually tip toward the more recent "greats". The fewer survivors there are from a given era, the less likely the greats from that era will make the "Top Ten."

Personally, I can only go back as far as the 1956 FIPEX show, and that is just to wonder if I even attended it. After that, I was not involved with SIPEX in 1966, had a dealer booth at Interphil in 1976, represented the Philatelic Foundation at Ameripex in 1986, reported on Pacific '97 from afar, and visited Washington 2006 to cover that show.

So from that small sampling, I would say that Ameripex was the best—knowing full well that the 1947 CIPEX, celebrating the Centennial of U.S. stamps, might well have been better.

My own assessment not only comes from having been a small part of Ameripex, but also from the excellence of the management and the execution of that 1986 event. The great collectors of Chicagoland, led by Les Winick as Show Director and the members of the Chicago Philatelic Society, had a plan, and carried out that plan.

Taking just one aspect, the publicity leading up to Ameripex was great. In that respect, I can go back to coverage of the First U.S. International in 1913 and compare the amount and quality of the news releases, as well as the subject matter. In that regard, the first shows were more elitist. While they welcomed the general

public, the coverage focused on the leading philatelists and their participation going into the event as well as in the post-show coverage.

The tipping point came with the 1966 show. The 1956 event was huge, and the New York leadership decided that it was too large, and unmanageable. So going into planning for the next International, the New York group wanted something more exclusive.

Eventually, a New York group led by Herb Rosen of Interpex fame attempted to put together a more commercially-based U.S. International, but the more traditional philatelists, led by STAMPS Magazine founder Harry Lindquist, got the endorsement of FIP and turned to Washington, D.C. at a relatively late stage.

With that, subsequent shows have been more inclusive, and larger, motivated in part by U.S. Postal Service participation and encouragement. As might be expected, when it comes to selling their new issues, the Postal People prefer a "more the merrier" approach to attendance.

The Ameripex leadership did a wonderful job of promoting the show, locally and in the philatelic press. At that time I think, in addition to being the PF Director of Education, I was also still the Stamps Column Editor for the *New York Times*, so it was in that capacity that I was on the receiving end of Ameripex news releases.

And they were excellent. We covered the plan laid out by Ameripex leaders in our March 4 issue, and in this issue we carry a sampling of the releases carrying out those plans. Almost every week brought at least one announcement—and they almost always were worth passing along to readers, with little need for enhancement.

At that time there also were more philatelic outlets, including commercial periodicals as well as society journals, and they were the primary media for reaching collectors within organized philately. And there were still some local general media stamp columns.

Today, all that has changed. There are still a couple of commercial philatelic periodicals—us and *Linn's*—and the non-profit APS' *American Philatelist*, but the development of the social media has opened up the possibilities for much wider distribution of show news than had been true in the past—even as recently as news coverage for Washington 2006.

And it is from that wider pre-show distribution that we may well see surprisingly large numbers of new people visiting WSS-NY 2016. Between Facebook, Twitter, the WSS website, email campaigns and other forms of new media, the coverage of this show will go well beyond what we are used to seeing in the print coverage of the past.

After that will come the hard task of converting visitors into stamp collectors, and the WSS-NY leadership has neither underestimated nor overlooked that challenge. You can see for yourself at www.ny2016.org

For me, if WSS-NY 2016 can even come close to Ameripex, I would be delighted. More important, I can tell you that they have much more lofty goals, which is one of the reasons I came away from my phone conversation with Steven Rod feeling so good about what we will experience in little more than two months.



World Stamp Show NY 2016 News Update

NEWSLETTER 11 RELEASED

World Stamp Show-NY 2016 has issued its eleventh and final quarterly newsletter. The exhibition runs for eight days from Saturday May 28 through Saturday June 4 at the Javits Center in New York City.

The newsletter is the organization's largest with 12 pages of the latest details about the once-in-a-decade event. It may be downloaded directly from the show website, <http://www.ny2016.org/>, by selecting News Updates under the Show Info Menu. Here's a brief summary of the contents:

- Exhibition president Wade Saadi explains in his opening column, "World Stamp Show-NY 2016 will have something for every collector and in most cases, way more material than you can consume."

- Four of the seven USPS first day of issue releases scheduled to take place are depicted.

- News about the U.N. Postal Administration's Peacekeeper issue with a preliminary image and 65th UNPA Anniversary personalized sheet ceremonies is also referenced.

- Show theme days and subjects are now set, and are listed later in this News Update.

- Preliminary exhibitor details are given for the first time. There are 4,118 frames among all competitive classes totaling 697 exhibits from 76 different countries.

- Collectors are also reminded that the hotel room rate discounts arranged by the show will end as of April 23 when the properties revert to full price. Attendees are asked to making reservations now to avoid disappointment. Maps of the show-sponsored hotels in New York and New Jersey are found at the end of the newsletter.

WEBSITE UPDATES

In addition to Newsletter #11, other information at the World Stamp Show website includes the complete schedule of meetings and events, by selecting Meeting/Events on the News Updates page. The 128 attending societies and organizations manning booths and/or sponsoring meetings is believed to be a record number for any international exhibition.

The dealer and postal administration listing also is too large to include in the newsletter. The updated dealer list can be viewed under Bourse on the World Stamp Show website. Collectors are encouraged to contact dealers directly before the show to express their interests. (In this edition of *Mekeel's & STAMPS* we have ads from many of the participating dealers, with contact information and direct links.)

Full show information is online at <http://www.ny2016.org>. Send questions to info@ny2016.org.

THEME DAYS & USPS EVENTS

TBA = To Be Announced

Saturday, May 28 – The World of Stamps Day

9:15 – WSS-NY 2016 Opening Ceremony

11:00 - USPS First Day Ceremony Stamp: TBA

Sunday, May 29 – Learning Never Ends Day

11:00 – USPS First Day Ceremony. Stamp: TBA

Monday, May 30 – Armed Forces Day

11:00 – USPS First Day Ceremony. Stamp: TBA

Tuesday, May 31 – Science Meets Stamps Day

11:00 – Special New Stamp Unveiling

Wednesday, June 1 – U.S. Stamp Day

11:00 – USPS First Day Ceremony. Stamp TBA:

Thursday, June 2 - Beautiful Americas Day – U.N. Day

11:00 – USPS First Day Ceremony. Stamp: TBA

Friday, June 3 – Children of the World Day

11:00 – USPS First Day Ceremony. Stamp: TBA

Saturday, June 4: Topical Collecting Day



World Stamp Show NY 2016 News Update

16 NATIONAL PARKS STAMPS AT WSS!

As we went to press, the USPS announced that it will issue a pane of Forever stamps depicting 16 National Parks.

Per the announcement, "To create buzz and excitement among national park fans, each stamp will be previewed alphabetically over the next three weeks, beginning Monday, April 4."

The June 2 first-day-of-issue ceremony will take place at 11 a.m. at the World Stamp Show NY-2016. Dedication ceremonies also will take place at or near each of the national parks depicted on the stamps.

GEMS ON DISPLAY AT WSS

World Stamp Show-NY 2016 will have on display an unprecedented array of priceless philatelic material in the exhibition's Court of Honor and Invited Exhibits.

As might be expected, the world's most valuable stamp will be there, the unique British Guiana one cent magenta, which was sold at auction June 17, 2014 for \$9.48 million dollars to fashion shoe designer Stuart Weitzman. The stamp is on a three-year loan to the Smithsonian's National Postal Museum and will be in a special display case at their booth through Friday of the show.

The world's first two postage stamps will be represented by truly remarkable items courtesy of The Postal Museum of Great Britain and their National Archives. Two specially designed frames will feature two sheets: the very first printed registration sheet of the Penny Black, plate 1 before hardening, dated April 15, 1840; and the earliest known example of the two penny blue, a sheet from plate 3 from January 1841. Both sheets, originally of 240 examples, are nearly intact with just a couple dozen of each removed.

The 1d sheet has never been shown outside of the United Kingdom, while the 2d sheet has never been on public display anywhere. A presentation about them, "Postal Reform & the Penny Black," will be given at 10:30 a.m. on Tuesday, May 31 by Douglas N. Muir, Senior Curator, Philately, The Postal Museum.

Another great display item will be the earliest known example of the Penny Black postage stamp from the collection of Alan Holyoake. It was recently discovered in the personal archive of Robert Wallace, the leading postal reformer of the time, who created an archive of items dealing with Great Britain's penny postage program of 1840. The stamp, lettered A I, comes from the first row of the sheet printed from the first printing plate 1a completed on April 8, 1840.

The stamp is attached on a sheet of stout paper together with a proof of a Mulready, as presented by Rowland Hill to the Council of Academicians on April 10, 1840 for approval of the proposed design, which was enthusiastically given. At the top of this sheet Wallace inscribed in his own hand, "1st Proof of Penny Postage Stamp Cover, presented to Mr. Wallace by the Right Honable. The Chancellor of the Exchequer, Francis Thornhill Baring, April 10th, 1840." and endorsed beneath the stamp, "Universal Penny Postage Fly or Loose Stamp, presented to me Mr Wallace as above" and noted "These come into public use on the 6th of May 1840".

Another wonderful display for show visitors is the only known cover with the Mauritius 1847 1d orange red and 2d deep blue issues, from the collection of Vikramm Chand. The postal history of Mauritius is forever entwined with the story behind its first issue of 1847. Lady Gomm, wife of the governor, was planning a lavish ball and decorated the invitation envelopes with new-fangled postage stamps hastily produced by a local watch maker. Each was to have been inscribed "Post Paid," but shortly after being released were found to bear "Post Office" instead. It is believed fourteen 1d orange red and twelve 2d deep blue stamps have survived, along with only three Ball covers.

All of these rarities and many more await visitors to World Stamp Show-NY 2016, to be held May 28 through June 4 at the Javits Center in New York City. Many can be viewed online at: http://www.ny2016.org/SubMenu/Rarities_on_Display.aspx?id=484.

Complete information on this huge, once-in-a-decade U.S. event can be found at <http://www.ny2016.org>.



World Stamp Show NY 2016 News Update



MEDALS READY!

The medal design for WSS-NY 2016 was recently released. The medals are being custom die struck in antique bronze, measuring 2" x 3" inches and weighing almost eight ounces. Designed by Niko Courtelis, it features the show logo on one side within a raised stamp border, while the back features a stylized magnifying glass that creates an area for medal recipients' names to be custom engraved. The medals are being minted by the American owned and operated Northwest Territorial Mint/Medallion Art Company.

World Stamp Show-NY 2016 recently posted the listings of competitive philatelic and literature exhibits are now posted on its website at http://www.ny2016.org/SubMenu/Exhibits_Listing.aspx?id=495.

Sorted by frame number or by exhibitor name, the details will be

useful for those planning a visit to the exhibition and to see the depth and breadth of subjects on display and in print.

The Exhibits Selection Committee received applications for many more frames than were initially available. World Stamp Show-NY 2016 Commissioner General Stephen D. Schumann and Judges & Judging Chairman Stephen Reinhard commented, "These are the finest selections of competitive exhibits to be shown at a World Philatelic Exhibition in many years. The selection process was very difficult, considering we had over 6,500 frames applied for and we could only accommodate 4,125." The initial allocation of 3,800 competitive frames actually was increased to meet some of the demand.

Of the 700 different exhibits is, Postal History leads with 204 exhibits, Traditional has 159, Single Frame 82, Thematic 61, Youth 52, and the remaining classes making up the difference.

Also online is the list of 175 literature entries. Like their stamp counterparts, application requests far exceeded initial estimates.

The last of the exhibit frames are on the way from the Texas manufacturing facility to the New Jersey warehouse to join the rest that have already arrived. All will be set up by Javits Center staff and ready for loading by Wednesday, May 25. The frames are available for sale after the show. Anyone interested in purchasing them should email christine.jimenez@ny2016.org as soon as possible for details.

Complete information on this huge, once-in-a-decade U.S. event can be found at <http://www.ny2016.org>.

Parks Pane to Be Issued at WSS-NY

Over a period of three weeks the U.S. Postal Service rolled out its National Parks set of 16 Forever stamps. The complete set, which will be issued on June 2 at World Stamp Show-NY 2016 in a pane of 16 different stamps, are illustrated on page 25.

Released one stamp per day, we now have the complete set and it is a mix of new takes on sites previously pictured on stamps as well as first-time releases for some of the other gems administered by the National Park Service, which is celebrating its Centennial in 2016.

One of the stamps features **Yellowstone National Park**. While previous U.S. issues (Scott 744 and 1453) pictured the Old Faithful Geyser, the new stamp is one of many in this set that stresses the photography more than it does the Park. Yellowstone, believed to be the first National Park in the world, was established on March 1, 1872. The park is home to free-ranging herds of bison, thus the dramatic photo.

The **Mount Rainier National Park** stamp is another that offers a new take on a previously-used subject. Previous Mount Rainier stamps used daytime views of the snow-capped mountain from a distances, while this one uses time lapse photography to create a star-lit night. Mount Rainier was established as a National Park in 1900, even before the National Park Service.

At the other end of the spectrum we have relatively new sites selected from among the 400-plus units within the Parks Service. One example is the **San Francisco Maritime National Historic Park**, which is located near Fisherman's Wharf and was established in 1988. As one of the less well-known sites, the stamp is more in the tradition of these issues, using a photo of a three-masted sailing ship, one of the historic vessels (that also include a tugboat) at what is sometimes referred to as the San Francisco Maritime Museum, its name before 1978, when the collections were acquired by the National Park Service.

The **Marsh-Billings-Rockefeller National Historical Park** stamp is interesting in that it features a scene that can be seen at the Woodstock, Vermont, Historical Park only in the painting that is used on the stamp—and that painting is Alfred Bierstadt's "Scenery in the Grand Tetons"—a totally different National Park located in Wyoming.

The selection of this site and painting also demonstrates the diversity of America's National Parks system. Marsh-Billings-Rockefeller covers 643 acres while another stamp in the new set features the 1,217,000 acre **Grand Canyon National Park**. This is the sixth U.S. stamp for the Grand Canyon National Park—including in the 1934 set—and in this case instead of focusing on the canyon, the stamp image is a detail of "The Grand Canyon of Arizona, from Hermit Rim Road," by artist Thomas Moran.

The other National Park that shares appearances in the 1934 and 2016 National Parks sets is **Acadia**. In this case the scenes are similar. The 1934 7¢ black stamp presented a view of Great Head while the 2016 stamp pictures the Bass Harbor Head Light.

The **Arches National Park** stamp is another that will be familiar to collectors, as it features Delicate Arch, which also was used on the on the 1996 stamp commemorating the Centennial of Utah Statehood. Delicate Arch is one of more than 2,000 stone arches in the park, which is located in eastern Utah and contains the greatest density of natural arches in the world. (Zion National Park, in southwestern Utah, was featured on the 8¢ 1934 National Parks stamp and on a 2009 Scenic American Landscapes Airmail stamp.)

Still another Park that has been previously honored with a U.S. stamp is **Everglades National Park**, as a 1947 stamp was issued to commemorate the Dedication of this National Park. (Everglades and its alligators have appeared as parts of other stamps, but the 1947 issue is the only other one the 2016 issue that is devoted specifically to the Everglades National Park.)

The remaining 2016 National Parks issues are devoted to first-time selections, as follows:

Assateague Island National Seashore: Wild horses of Maryland's and Virginia's Assateague Island National Seashore are featured on this stamp. The wild horses are split into two main herds, separated on Assateague by a fence at the Virginia/Maryland state line. The Virginia herd is also known as Chincoteagues because they live within Chincoteague National Wildlife Refuge. The annual Chincoteague Pony Swim and auction draws thousands of spectators each July.

Bandelier National Monument: A 1930s pastel-on-paper painting by Helmuth Naumer (1907–1990) depicts the Pueblo Revival-style visitor center at Bandelier National Monument in Frijoles Canyon near Los Alamos, New Mexico. The 33,000 acres of rugged, beautiful canyon and mesa country shows evidence of a human presence there going back more than 11,000 years. Petroglyphs, dwellings carved into the soft rock cliffs, and standing masonry walls pay tribute to the early days of a culture that still survives in the surrounding communities.

Carlsbad Caverns National Park: The Carlsbad Caverns stamp image is a photograph of the interior of the caverns in this New Mexico park. Carlsbad Cavern is one of more than 300 limestone caves in a fossil reef laid down by an inland sea 240 million to 280 million years ago.

Glacier Bay National Park and Preserve: Covering 3.3 million acres of rugged mountains, dynamic glaciers, temperate forests, wild coastlines and deep sheltered fjords, Glacier Bay National Park and Preserve is a highlight of Alaska's Inside Passage and part of a 25-million acre World Heritage Site—one of the world's largest international protected areas. With no roads to the park, it is still enjoyed by over 400,000 visitors a year, primarily by cruise ships or air, but also by white-water rafting. Glacier Bay is not to be confused with Glacier National Park, which is located in Montana and has been pictured before on United States stamps, including the 1934 9¢ National Park stamp.

Gulf Islands National Seashore: The Gulf Islands natural and historic resources include mainland areas and parts of seven islands along the Gulf of Mexico barrier islands of Florida and Mississippi. While most of this National Park is made up of submerged lands populated by marine life, there also are marshes with diverse plants and animals, and oak forests that contain resident and migrating birds.

Kenilworth Park & Aquatic Gardens: A water lily with a bloom the size of a basketball is featured on the stamp for this Washington, D.C. 700-acre park surrounded by urban neighborhoods, on the banks of the Anacostia River and west of the Baltimore Washington Parkway.

Haleakalā National Park: Located on the Hawaiian island of Maui, this park covers an area of 33,265 acres of which 19,270 acres is a wilderness area. The park features the dormant Haleakalā Volcano. The summit area, which is pictured on the stamp, includes the huge Haleakalā Crater, two miles wide and 2,600 feet deep, with cabins in the crater for hikers.

Theodore Roosevelt National Park: According to the National Park Service, when Theodore Roosevelt came to Dakota Territory to hunt bison in 1883, the rugged landscape and strenuous life he experienced there would help shape a conservation policy from which we still benefit today. It was at his Elkhorn Ranch that he developed many of his conservation ideas. Following Roosevelt's death in 1919, the Little Missouri Badlands were explored to determine possible park sites. In 1947 President Truman established the Theodore Roosevelt National Memorial Park.

A photograph of the Little Missouri River winding through the Badlands of North Dakota is featured on the stamp.

For additional information on these National Parks stamps, the Parks themselves, and images of the previous issues, go to the USPS New Issues section of www.stampnewsnow.com.

The 2016 National Parks Issue



Arches National Park



Acadia National Park



Assateague Island National Seashore



Gulf Islands National Seashore



Bandelier National Monument



Carlsbad Caverns National Park



Everglades National Park



Kenilworth Park & Aquatic Gardens



Glacier Bay National Park & Preserve



Grand Canyon National Park



Haleakala National Park



Theodore Roosevelt National Park



Marsh-Billings-Rockefeller National Historical Park



Mount Rainier National Park



Yellowstone National Park



San Francisco Maritime National Historical Park

Topical Highlights:

New York, New York

by David A. Kent

The upcoming World Stamp Show NY 2016 brings the opportunity to make a claim for topical collectors to consider: more stamps have been issued for New York City than any other city in the world. Yes, London, Paris and Rome, along with Tokyo, Beijing and Mumbai have all been honored with stamps, but none have anywhere near as many postal tributes as the Big Apple. So, as a salute to the coming Big Show, here is a highly selective review of some of the stamps that have been issued over the years for the City That Never Sleeps.

One of the first Europeans to explore the environs of New York was an English ship captain working for the Dutch East India Company, Henry Hudson, with his ship Half Moon. In 1609 he sailed up and down the river now named for him, leading to Dutch claims on the area. Somehow a better philatelic representation of this event is the view of Hudson's ship on the 1953 stamp for New York's 300th anniversary, picturing the Half Moon, rather than the scraggly bearded fellow on the British stamp from 1972.

In 1625 the Dutch reached an agreement with the natives living on Manhattan (the Lenape tribe's name for the island), and built a settlement they called New Amsterdam. The Dutch officially incorporated the city in 1653. Before long the Dutch and British began squabbling over their settlements in America, and in 1664 England took over the village and renamed it New York after the Duke of York. Over the following centuries more settlements grew on the land north of Manhattan, and nearby parts of Long Island. In 1898 the City of New York was chartered by the State of New York, with today's five familiar boroughs. Lots of different dates here, which explains the range of "anniversary" stamps for New York City's history.

The Dutch, by the way, still celebrate their New York City roots, and last year the Netherlands post office issued a set of stamps for The City, in three sheetlets each with its own theme. Each sheet contains the same six stamps, two for each theme, with explanatory text (in Dutch) below, arranged to look like a newspaper.

- Language: a baseball jersey with the name New York Yankees spelled Jan-Kees; and fictional signboards for the New York subway with destinations Harlem and Brooklyn (using the Dutch versions, Haarlem and Breukelen).

- Architecture: City Hall in The Hague, designed by American architect Richard Meier (1996); and the High Line in New York, a park along an abandoned elevated railroad designed by Dutch landscape architect Piet Oudolf (the extension to the Javits Center recently opened).

- Pop Culture: modern art from New York, "Hot Dog USA," a lithograph by Dutch-born American artist Jan Cremer (1967); and "Kid Freeze" (the guy with the boombox) by Brooklyn-born photographer Jamel Shabazz (circa 1984).



Undoubtedly the most famous structure in New York is the Statue of Liberty, a gift from France in 1886. Its first postal appearance was on the 15-cent value of the U.S. 1922 definitive series, but it has since been pictured on so many stamps that the American Topical Association has issued a handbook devoted to this one subject. The Statue says "New York" so much that it was used as a key part of the logo for this year's stamp show.

Many other New York City structures have appeared on stamps: the Brooklyn and Verrazano Narrows Bridges, the Empire State Building, Grand Central Terminal, and, sadly, the World Trade Center, destroyed in a terrorist attack in 2001. Although the U.S. semi-postal issued after that attack honors first responders across the nation, the image is from New York.

Famous people from New York? Many American presidents have lived there at one time or another, but only Teddy Roosevelt was born there. Mayor Fiorello LaGuardia earned his place on a stamp, too. But if you included all of the famous people who have lived in The City over the decades, along with all of the actors, television personalities, opera singers and musicians who have performed there, and all the sports figures who have played there, you could fill pages and pages in your album.

One of the greatest sports rivalries in history was the legendary battle between the New York Yankees and the Brooklyn Dodgers, which, when you include the players involved, can also fill album pages. When two National League teams were based in New York, "The Shot Heard Round the World" marks the dramatic Giants victory over the Dodgers. Wilt Chamberlain once played for the Harlem Globetrotters. Although a recent Canadian stamp honored hockey goalie Lorne "Gump" Worsley as a Canadian player, he actually played much of his career for the New York Rangers.

It would take ages to list all of the stamps that have depicted art works from New York museums and public buildings. Among the more iconic are the lions in front of the New York Public Library (Mayor LaGuardia named them Patience and Fortitude), and the Art Deco model of "Wisdom," which resides at Rockefeller Center.

How about stamps for stamp shows? The Post Office Department invented the souvenir sheet, back in 1926, to honor the Second International Philatelic Exhibition in New York, although the subject was a Revolutionary War battle in a suburb north of the City, White Plains. Further internationals in 1936, 1947 and 1956 also brought souvenir sheets. Stamps of all sorts have been issued at smaller New York stamp shows over the decades, far too many to list.

The U.S. Postal Service has announced that it will issue a wide range of stamps at WSS 2016, a new release every day except the closing day.

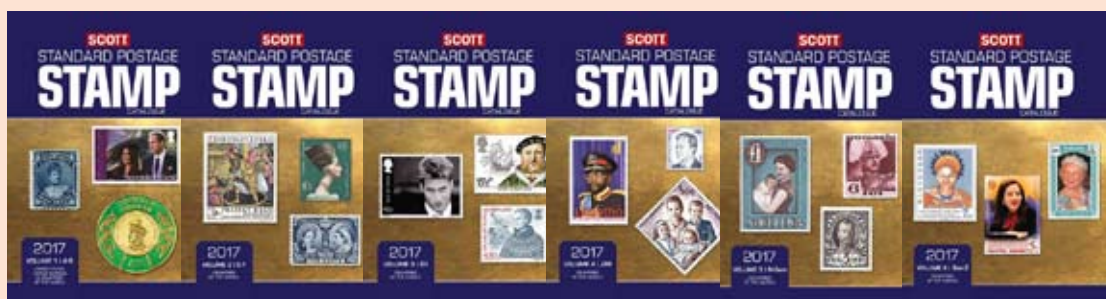
Ready to start your New York City on Stamps collection? You need to join the ATA's Americana Unit. You can find more information at the ATA booth at the New York show.

See you there!





2017 Scott Catalogs!



- Vol. 1 U.S., U.N., Countries, A-B
- Vol. 2 Countries C-F
- Vol. 3 Countries G-I
- Vol. 4 Countries J-M
- Vol. 5 Countries N-Sam
- Vol. 6 Countries San-Z
- Vol. 7 U.S. Specialized



124.99 **85.00 each**
RSC-C17 _____ (Fill in vol. #)

Must order the complete 6 or 7 volume set to receive these prices

plus \$7 shipping each volume
 Will be shipped as issued

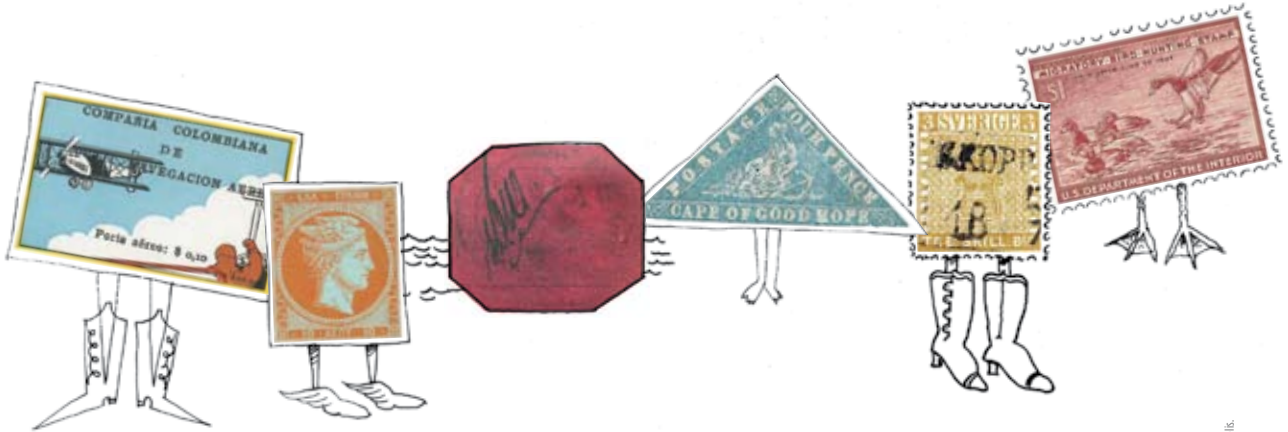
Visit us online at www.subwaystamp.com!

America's (and the World's) Largest Stamp Collecting Supply Company

SHIPPING CHARGES
 By MAIL/UPS *: \$7.50 Min. Orders over \$54 ADD 12%,
 Over \$100 ADD 10%, Over \$250 ADD 8%
 * Some Remote Areas Carry Higher Shipping charges.
 PA Residents: ADD 6% Sales Tax
 ADD \$5/\$10 Per Parcel on high weight/low cost orders shipped to the 11 Western States & TX
 Ask for Shipping Charges to AK, HI, P.R., APO's, FPO's, Foreign

Phone: 1-800-221-9960 Fax: 1-888-221-9960
 Email: custserv@subwaystamp.com Phone: 814-946-1000 Fax: 814-946-9997

2121 Beale Ave, Altoona, Pa 16601 - DEPT. MEK
www.subwaystamp.com/
 Prices subject to change without notice
 Not Responsible For Typographical Errors



You can't afford to miss this show.

AN EVENT LIKE WORLD STAMP SHOW-NY 2016 only comes along once every ten years, and it's packed with opportunities you won't want to miss! From May 28 to June 4, catch seldom-seen, world-famous rarities worth hundreds of millions of dollars. Visit 200 dealers and bid in six days of amazing auctions. Take a walk around the world at dozens of post offices. Catch first-day ceremonies for nearly 50 new USPS® stamps!

Thanks to money-saving offers on hotels, airfares and affordable eating—not to mention free admission—this show is also packed with opportunities to buy more stamps, more affordably, than ever before. But hurry! Hotel specials are only guaranteed until May 4.

See a real Jenny biplane and meet the aviator who flies it. See John Lennon's childhood stamp album, from the Smithsonian's National Postal Museum, and the first-ever Penny Black, all the way from London. Attend seminars in the TurningPoint Pavilion Theater or volunteer to help children learn about our wonderful hobby for the first time. There's so much going on here that you just can't pass up.

Full details at ny2016.org or by calling 844-WSS-2016 (toll-free, 844-977-2016).



This ad designed by the World Stamp Show—New York, 2016 Stamp Images courtesy Robert A. Siegel Auction Galleries and Arnis Media/Scott's Catalogues. Artwork by Niko Gounelis.